

 **EvenTrigger**®
Getting Started Guide

>> Table of contents

>> Welcome to EvenTrigger	3
■ Overview	3
■ System Requirements	3
>> Getting started	
■ EvenTrigger setup	3
Windows 2000	3
Windows NT 4	3
■ EvenTrigger administration	3
■ Use a predefined Trigger	4
Step 1: Define the actions	4
Step 2: Activate the Trigger	4
Step 3: Verify the service status	5
Step 4: The Trigger is now ready	5
■ Define your first Trigger	5
Step 1: Creating the Trigger	5
Step 2: Define the filter	6
Step 3: Define the actions	6
Step 4: Verify the service State	6
Step 5: The Trigger is now ready	6

>> Welcome to EvenTrigger

■ Overview

EvenTrigger is a Windows NT/2000 service allowing administrators to set triggers on event logs in order to:

- > Send a popup message
- > Send an e-mail via an SMTP server
- > Start a process or a script (VBS, JS, EXE, CMD...)
- > Insert events in a OLEDB database

■ System Requirements

Target computers: Windows NT 4 (no service pack requirement), Windows 2000, Windows XP
Administration Console: Windows NT 4 Service Pack 5, Windows 2000, Windows XP

>> Getting started

■ EvenTrigger setup

Windows 2000

To install EvenTrigger, double click on the installation package “EvenTrigger_x86.msi” and follow the install instructions.

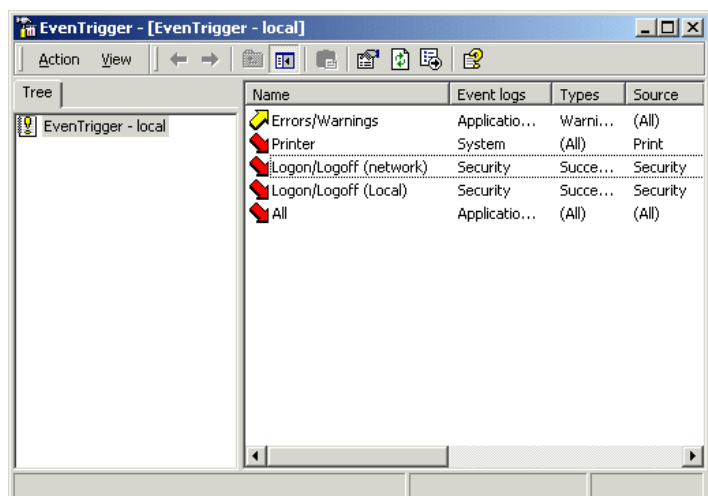
Windows NT 4

To install EvenTrigger, double click on the installation program “EvenTrigger_x86.exe” and follow the install instructions. At the end of the setup the installer will ask you to install the Microsoft Management Console 1.2. This is required to run the EvenTrigger administration console.

■ EvenTrigger Administration

Once EvenTrigger is installed , you can start the administration console from the start menu:
Start > Programs > EvenTrigger > EvenTrigger

You will see several predefined triggers in the right pane of the console (See Figure 1).

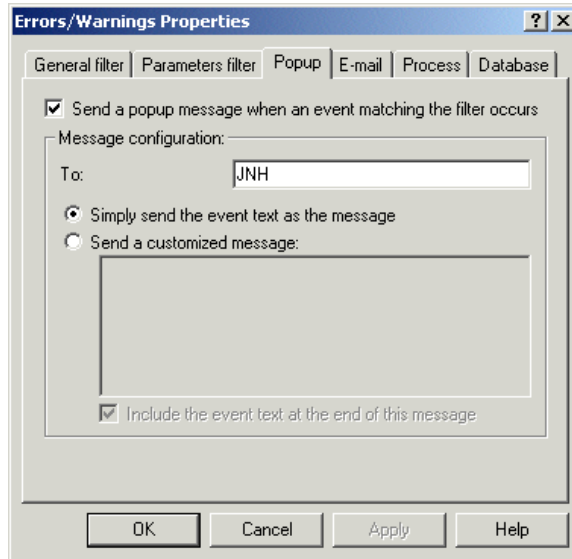


.: Figure 1 : EvenTrigger Administration Console

- Use a predefined trigger

Step 1: Define the actions

In order to use one of them, you need to configure your actions first, in the trigger property dialog box (double click on the trigger item). You can choose between the following options: send a popup, send an e-mail, start an executable or insert the event in a database.



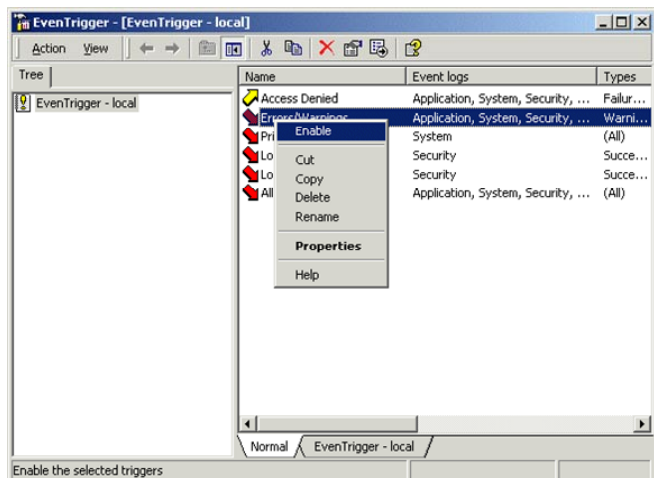
.: Figure 2 : Define a popup action

To begin with a simple action, you send a popup to your computer with the event message. In order to do this: double click on the trigger, choose the popup tab in the trigger property sheet, check the *Send a popup...* checkbox, and enter your computer name in the *To* field before clicking on *Ok*.

Step 2: Activate the trigger

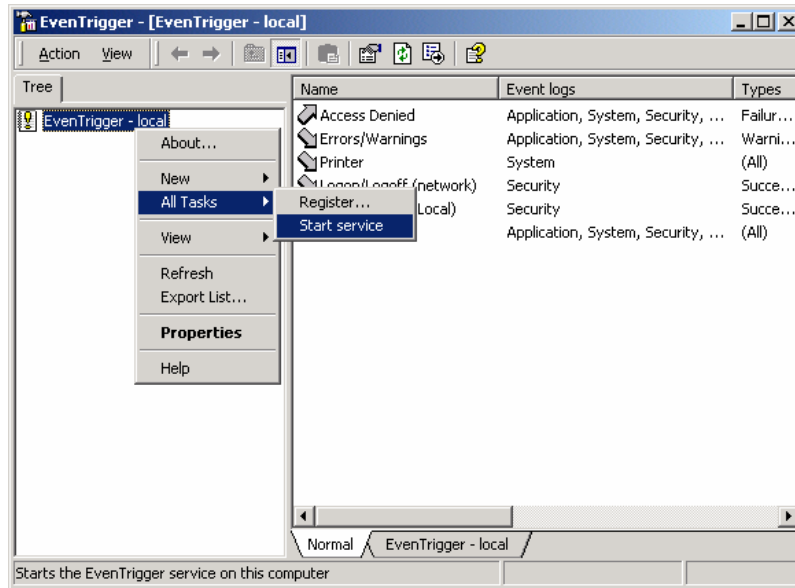
The default state of a predefined trigger is disabled. Once the trigger has been activated with the trigger context menu (see Figure 3), its icon will become a yellow up arrow.

- Disabled trigger
- Enabled trigger



.: Figure 3 : How to enable a trigger

Step 3: Verify the service status



.: Figure 4 : How to start the EvenTrigger service

If all triggers arrows are grayed, you must start the EvenTrigger service through the EvenTrigger context menu (See Figure 4) before using any trigger.

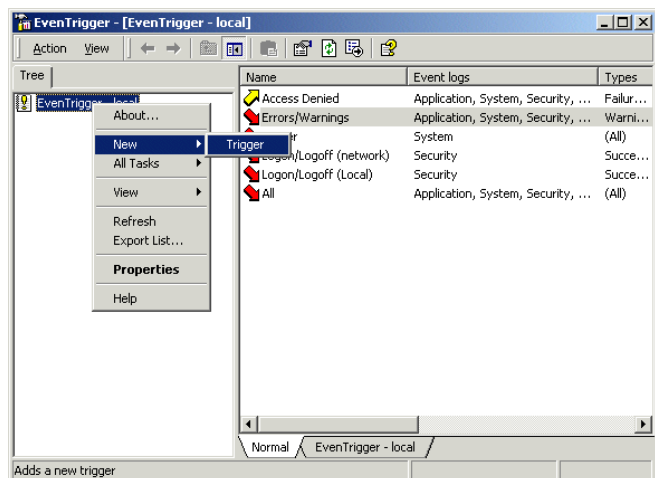
Step 4: The Trigger is now ready

You now have to wait for events to be generated in the event log to test the trigger.

■ Define your first trigger

Step 1: Creating the Trigger

You can create your own customized triggers with the EvenTrigger context menu:



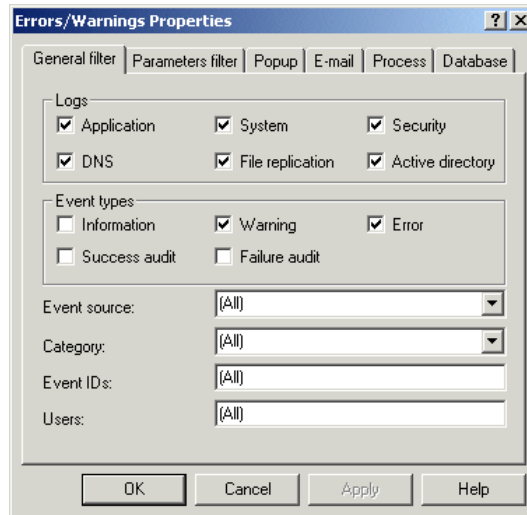
.: Figure 5 : How to create a new Trigger

Step 2: Define the filter

After creating the trigger, double click on IT to show the property dialog box.

With the *General filter* tab (see Figure 6), you can set rules on the log name, events types, event sources, event category, event Id, and users.

You can define multiple entries for Event Ids and users by separating them with a comma character.



.. Figure 6 : Define the filter for a Trigger

Step 3: Define the actions

See “Use a predefined trigger”

Step 4: Verify the service status

See “Use a predefined trigger”

Step 5: The trigger is now ready

You now have to wait for events to be generated in the event log to test the trigger.

>> Additional information

>> Should you require any further information about EvenTrigger, please contact IS Decisions team at one of the following:

- Phone: +335 59 41 42 20 (French time, GMT/UTC +1)
- Fax: +335 59 41 42 21

Web & Email : www.isdecisions.com ~ info@isdecisions.com

>> Technical assistance

- please use our Technical Support Request Form at: <http://www.isdecisions.com/index.cfm?p=support>
- or send an Email to support@eventtrigger.com